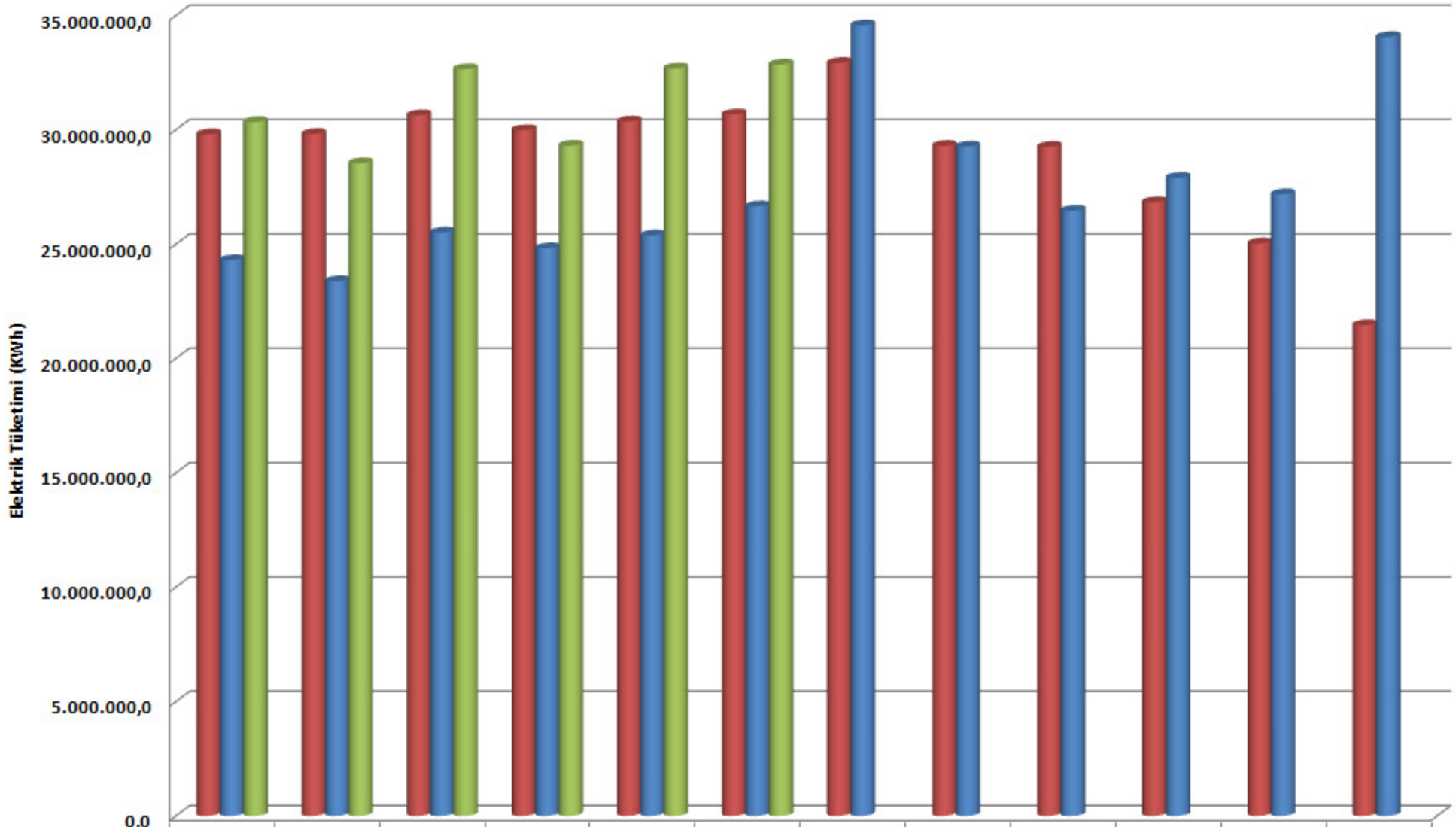


2008-2009-2010 Yılı Elektrik Tüketimleri



	OCAK	ŞUBAT	MART	NİSAN	MAYIS	HAZİRAN	TEMMUZ	AĞUSTOS	EYLÜL	EKİM	KASIM	ARALIK
■ 2008	29.799.000,0	29.808.900,0	30.637.728,0	29.980.764,0	30.363.696,0	30.674.952,0	32.919.876,0	29.295.684,0	29.252.580,0	26.833.280,0	25.035.550,0	21.459.820,0
■ 2009	24.302.980,0	23.377.204,0	25.511.071,0	24.822.417,0	25.381.634,0	26.648.270,0	34.572.640,0	29.260.970,0	26.461.890,0	27.905.580,0	27.182.910,0	34.059.150,0
■ 2010	30.339.820,0	28.542.660,0	32.645.760,0	29.300.190,0	32.677.830,0	32.852.020,0						